



REGIONAL SPECIALISED METEOROLOGICAL CENTRE-TROPICAL CYCLONES, NEW DELHI
TROPICAL WEATHER OUTLOOK

DEMS-RSMC TROPICAL CYCLONES NEW DELHI DATED 31.07.2021

TROPICAL WEATHER OUTLOOK FOR NORTH INDIAN OCEAN (THE BAY OF BENGAL AND ARABIAN SEA) VALID FOR NEXT 120 HOURS ISSUED AT 0600 UTC OF 31.07.2021 BASED ON 0300 UTC OF 31.07.2021.

BAY OF BENGAL:

YESTERDAY'S, WELL MARKED LOW PRESSURE AREA OVER GANGETIC WEST BENGAL & ADJOINING JHARKHAND LAY OVER SOUTHWEST BIHAR & NEIGHBOURHOOD AT 0300UTC OF TODAY, THE 31TH JULY 2021. IT IS LIKELY TO MOVE WESTNORTHWESTWARDS ACROSS SOUTHERN PARTS OF UTTAR PRADESH DURING NEXT 2 DAYS.

YESTERDAY'S, LOW PRESSURE AREA OVER SOUTHERN PARTS OF CENTRAL UTTAR PRADESH LAY OVER SOUTHERN PARTS OF HARYANA & NEIGHBOURHOOD AT 0300UTC OF TODAY, THE 31TH JULY 2021..

CONVECTION ASSOCIATED WITH THE ABOVE WELL MARKED LOW PRESSURE AREA OVER NORTHWEST JHARKHAND ADJOINING SOUTHWEST BIHAR & NEIGHBOURHOOD CENTERED WITHIN HALF A DEGREE OF 24.5N / 84.3E OVERLAND. ASSOCIATED BROKEN LOW AND MEDIUM CLOUDS WITH EMBEDDED INTENSE TO VERY INTENSE CONVECTION LAY JHARKHAND ADJOINING SOUTH BIHAR & NEIGHBOURHOOD. MINIMUM CLOUD TOP TEMPERATURE (CTT) IS MINUS 90 °C.

SCATTERED LOW AND MEDIUM CLOUDS WITH EMBEDDED INTENSE TO VERY INTENSE CONVECTION LAY OVER NORTHWEST BAY OF BENGAL, CENTRAL BAY OF BENGAL, NORTH ANDAMAN SEA AND GULF OF MARTABAN.

PROBABILITY OF CYCLOGENESIS (FORMATION OF DEPRESSION) DURING NEXT 120 HRS):

24 HOURS	24-48 HOURS	48-72 HOURS	72-96 HOURS	96-120 HOURS
NIL	NIL	NIL	NIL	NIL

ARABIAN SEA:

SCATTERED LOW AND MEDIUM CLOUDS WITH EMBEDDED MODERATE TO INTENSE CONVECTION LAY OVER SOUTHCENTRAL ARABIAN SEA. SCATTERED LOW AND MEDIUM CLOUDS WITH ISOLATED WEAK TO MODERATE CONVECTION LAY OVER REST OF ARABIAN SEA .

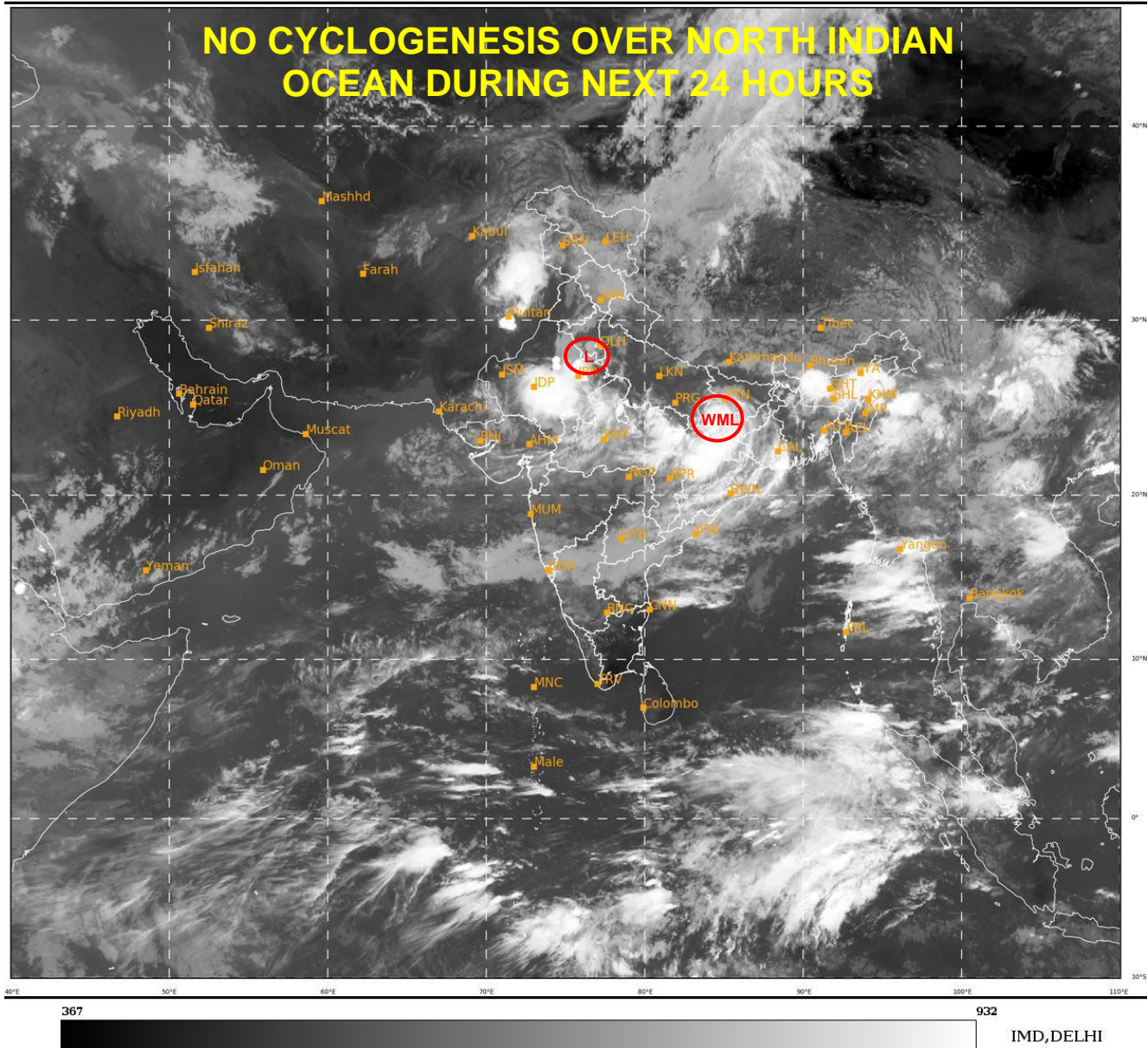
PROBABILITY OF CYCLOGENESIS (FORMATION OF DEPRESSION) DURING NEXT 120 HRS):

24 HOURS	24-48 HOURS	48-72 HOURS	72-96 HOURS	96-120 HOURS
NIL	NIL	NIL	NIL	NIL

REMARKS: NIL

SAT : INSAT-3D IMG
IMG_TIR1 10.8 um
LIC Mercator

31-07-2021/(0300 to 0326) GMT
31-07-2021/(0830 to 0856) IST



- WML STANDS FOR WELL MARKED LOW PRESSURE AREA
- L STANDS FOR LOW PRESSURE AREA